

Flush Diaphragm Pressure Transmitter XY-PTGP

Typical Feature

- Clamp flush diaphragm meets 3-A Sanitary Standards
- Stainless steel shell can be used in width Measured Medium
- Output signals 4 ~ 20mA, 0 ~ 5VDC, 0~10VDC ,1-5VDC
- Reverse polarity, instantaneous Overcurrent and Overvoltage protection
- Applied to High stability and sensitivity for high temperature,
- high viscosity and the medium are prone to clogging, or Food,
- Pharmaceuticals and Biotechnology
- Customized structure diversification is available.











Brief Introduction

XUYAN XY-PTGP Flush Diaphragm Pressure Transmitter, with stainless steel shell and laser-welded construction, is designed to suit 3-A sanitary standards; IP65 Ingress Protection, and Safety Explosion-proof, these performances makes it able to withstand harsh rugged application environments. In addition, this flush diaphragm pressure transducer also has the following advantages: high precision, fast response, small size, light weight, stable and reliable, strong overload capacity.

High stability and sensitivity for high temperature, high viscosity and the medium is prone to clogging, all this performance makes XY-PTGP flush diaphragm pressure transmitter/transducer can be used in food and beverage, pharmaceuticals and biotechnology, chemical glue, mobile working machine and tunneling application, such as air, oil, water and others fluid; Thoughtful specialized electric circuit design; ultra-high precision absolute pressure calibration equipment calibration; Accuracy class 0.25%; 0.5%. 4 ~ 20mA, 0 ~ 5VDC, 0~10DC standard electrical signal output with remote transmission alternative; Measurement Range: -100KPa~60 MPa., other measurement range is optional. Temperature Stability Index can be increased to 0.02%/FS/oC by using sensor temperature self-compensation and specialized circuit debugging.

Suggested Applications

-  Food and Pharmaceutical,
-  Beverage Processing,
-  Biological Products,
-  Chemical Glue,
-  Construction Machinery
-  Tunnel Excavation
-  Medical Equipment
-  Others automatic control and inspection systems

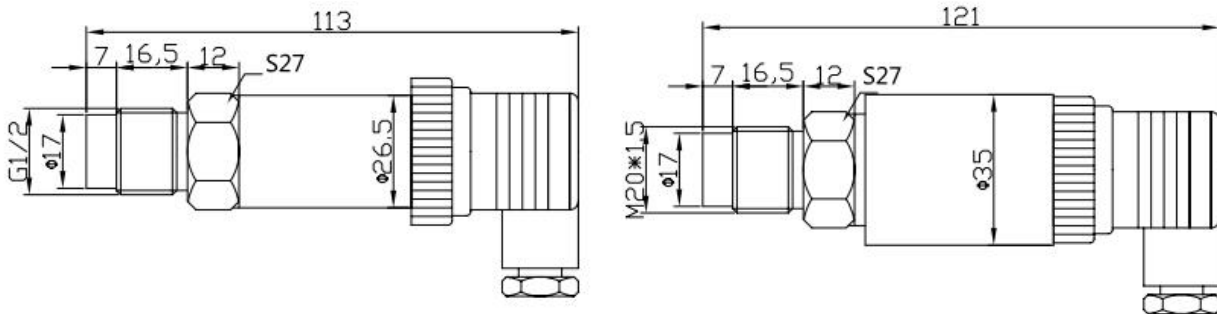
[More details for XY-PTGP, please contact us.](#)

Specification

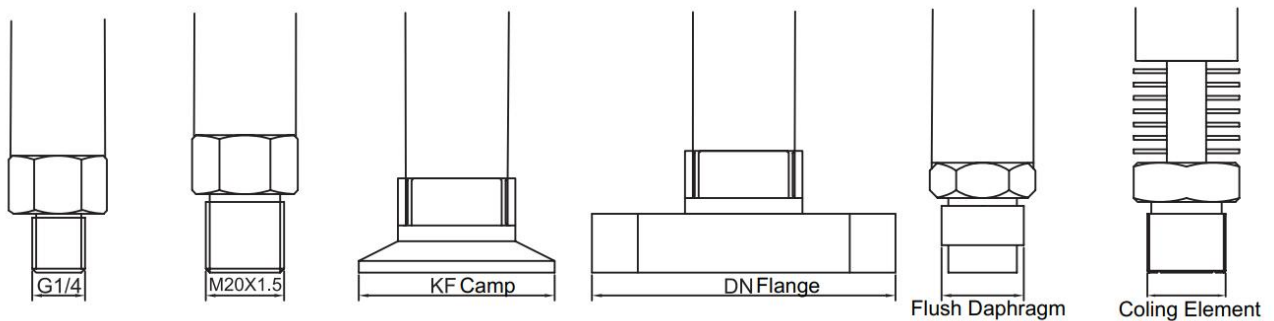
| | |
|--------------|----------------|
| Model | XY-PTGP |
|--------------|----------------|

| | |
|-------------------------------|---|
| General Pressure Range | -100KPa~0~1~5~10~25~60MPa |
| Pressure Type | Gauge Pressure Test |
| Dimension | Diameter Φ27 |
| Overload Capacity | 200-400% |
| Measurement Medium | Gas or Liquid with Compatibility of SS 304 or SS316 |
| Output Single | 4 ~ 20Ma, 0 ~ 5VDC, 0~10VDC |
| Power Supply | 9-32VDC, Typical 24VDC |
| Insulating Strength | >100MΩ at 500VDC excitation |
| Accuracy | 0.25%, 0.5% |
| Long-Term Stability/Year | Typical: ±0.2% FS/Year |
| Zero Temperature Drift | Typical: ±0.02%FS/°C; Maximum ±0.05%FS/°C |
| Sensitivity Temperature Drift | Typical: ±0.02%FS/°C; Maximum ±0.05%FS/°C |
| Response Time | ≤1ms |
| Mechanical Life | ≥5Million Pressure Cycle |
| Operation Temperature | -30 ~ 100°C; -40 ~ 125°C |
| Compensation Temperature | 0 ~ 60°C |
| Load Resistance | ≤[(U-6.6V)/0.02A] Ω |
| IP Protection Class | IP65; IP67; IP68 |

Dimension(mm)



Mechanical Connection(mm)



Electronic Connection

| | | |
|--------------------|---------|-------|
| 4-20mA(2-Wire) | Input + | Red |
| | Output+ | Black |
| 0-10V,0-5V(3-Wire) | Input + | Red |
| | Input - | Black |
| | Output+ | Green |

How To Order

| XY-PT | G | | KF | | 4M | | 1 | | A | | P2 | | M3 | | B1 | | T1 | | L | |
|-------|--------------------------|--|---------------------|-----------------------|----------------|------------|----------|------------|--------|------------|-------|------------|--------|------------|-----------------------|--------------------|----------------|------------|------------|-----------------|
| | Type | | Pressure Connection | | Pressure Range | | Accuracy | | Output | | Power | | Thread | | Electrical Connection | | dium Temperatu | | Additional | |
| G | General | | None | General | XK | (0-XKPa) | 1 | 0.15% | A | 4-20mA | P1 | 5V | M1 | M20*1.5 | A | HIRSCHMANN | T1 | -20~80°C | L | With Display |
| GA | Absolute Pressure | | P | Diaphragm Seals | XB | (0-XBar) | 2 | 0.25% | R | RS485 | P2 | 24V | M2 | G1/4 | B | Cable Outlet | T2 | -20~120°C | I | Explosion-Proof |
| DP | Differential Pressure | | DP | Differential Pressure | XM | (0-XMPa) | 3 | 0.50% | V1 | 0-10V | P3 | 12-28V | M3 | G1/2 | C | Circular Connector | T3 | 0~150°C | | |
| GR | IoT | | KF | Clamp | CC | Customized | 4 | 1.00% | V2 | 0-5V | P6 | 12V | M4 | 1/2NPT | CC | Customized | T9 | Customized | | |
| GT | Temperature& Pressure | | DN | Flange | | | 9 | Customized | V3 | 0.5-4.5V | P9 | Customized | M5 | 1/4NPT | | | | | | |
| MT | Mini Thickness | | 1210 | Explosion Proof | | | | | CC | Customized | | | M7 | ZG1/4 | | | | | | |
| MK | Economic | | 9999 | Customized | | | | | | | | | M9 | Customized | | | | | | |
| HF | High Frequency | | | | | | | | | | | | | | | | | | | |
| A | Air Conditioning | | | | | | | | | | | | | | | | | | | |
| B | Ink Corrosion Resistance | | | | | | | | | | | | | | | | | | | |
| C | Air Compressor | | | | | | | | | | | | | | | | | | | |
| M | Hydraulic Pressure | | | | | | | | | | | | | | | | | | | |
| W | Water Pressure | | | | | | | | | | | | | | | | | | | |

Shanghai XuYan Precision Technology Co., Ltd.

Address: No. 969, YunHan Road Pudong District Shanghai City China

Tel: +86 21 59241315

Email: sales@xvyanprecision.com

Website: www.xvyanprecision.com

Product Manager: Tyler Tou

Cell: +86 189 1797 0680

Email: ttao@Xuyanpercision.com